

51150250

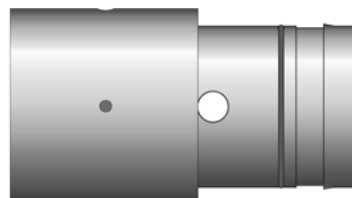
Splice Kit, Male

2.75 QC Casing

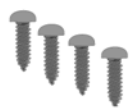
Splice kits include a male or female coupling, self-tapping screws, and vinyl tape. You will need a hacksaw, drill, and screwdriver.

1. Cut off damaged casing. Remove burrs.
2. Slide the coupling onto the end of the casing. Align grooves inside the coupling with casing grooves inside the casing.
3. Drill holes in the casing using the pre-drilled holes on the splice coupling as a guide.
4. Insert the self-tapping screws into the pre-drilled holes and screw them into the casing.
5. Seal the joint with vinyl tape.

The casing section now has a good QC end and can be joined to the next length of casing normally.



Male Splice Coupling



Screws



Tape

51150251

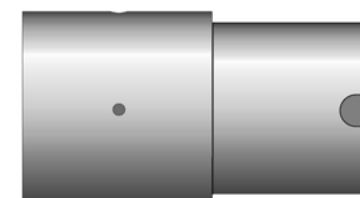
Splice Kit, Female

2.75 QC Casing

Splice kits include a male or female coupling, self-tapping screws, and vinyl tape. You will need a hacksaw, drill, and screwdriver.

1. Cut off damaged casing. Remove burrs.
2. Slide the coupling onto the end of the casing. Align grooves inside the coupling with casing grooves inside the casing.
3. Drill holes in the casing using the pre-drilled holes on the splice coupling as a guide.
4. Insert the self-tapping screws into the pre-drilled holes and screw them into the casing.
5. Seal the joint with vinyl tape.

The casing section now has a good QC end and can be joined to the next length of casing normally.



Female Splice Coupling



Screws



Tape

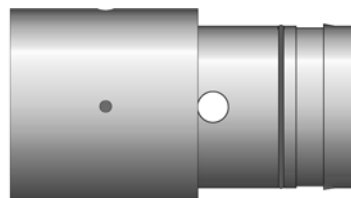
51150350

Splice Kit, Male

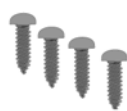
3.34 QC Casing

Splice kits include a male or female coupling, self-tapping screws, and vinyl tape. You will need a hacksaw, drill, and screwdriver.

1. Cut off damaged casing. Remove burrs.
2. Slide the coupling onto the end of the casing. Align grooves inside the coupling with casing grooves inside the casing.
3. Drill holes in the casing using the pre-drilled holes on the splice coupling as a guide.
4. Insert the self-tapping screws into the pre-drilled holes and screw them into the casing.
5. Seal the joint with vinyl tape.
6. The casing section now has a good QC end and can be joined to the next length of casing normally.



Male Splice Coupling



Screws



Tape

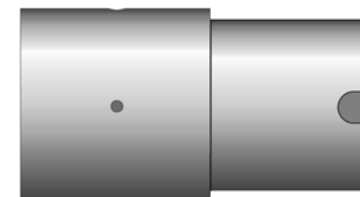
51150351

Splice Kit, Female

3.34 QC Casing

Splice kits include a male or female coupling, self-tapping screws, and vinyl tape. You will need a hacksaw, drill, and screwdriver.

1. Cut off damaged casing. Remove burrs.
2. Slide the coupling onto the end of the casing. Align grooves inside the coupling with casing grooves inside the casing.
3. Drill holes in the casing using the pre-drilled holes on the splice coupling as a guide.
4. Insert the self-tapping screws into the pre-drilled holes and screw them into the casing.
5. Seal the joint with vinyl tape.
6. The casing section now has a good QC end and can be joined to the next length of casing normally.



Female Splice Coupling



Screws



Tape